

# The Rail Mart

Circulation:  
2,300

Phone: (815) 236-2998  
E-Mail: [Editor@therailmart.com](mailto:Editor@therailmart.com)

*Conrad V. Tannhauser*

Editor  
The Rail Mart, Inc.  
651 Riley Drive  
Marengo, IL 60152

Vol. XXVIII Issue 11  
ISSN 1070-7751

November 15, 2014  
Deadline for next issue 12/15/2014  
Since 1986

## MOTIVE POWER

### Mid-Am Equipment, Inc.

1 – SW900, EMD Locomotive  
**Bob Schroeder: (480) 247-3892**  
Email: [bob@midamaz.com](mailto:bob@midamaz.com)

### The Andersons

Available For Lease:

Quantity	Model	Location: NC
8	GP 40-2	in NC
1	GP 40-3	in OR
2	SW 1200	in NC

**Chuck Brown: (419) 891-6386**  
Email: [chuck\\_brown@andersonsinc.com](mailto:chuck_brown@andersonsinc.com)  
**Matt Keck: (419) 891-6693**

## PIPES FOR CULVERTS

### The Rail Mart

For Sale:

12", 18", 20", 24", 36", 42", 48" and 60"  
pipe for use as culvert. Sold by the foot.  
For more information [Click Here](#)

**Conrad: (815) 236-2998**

## FREIGHT EQUIPMENT AVAILABLE

### RGCX

Available for Lease only:

14 4800 CF, Aluminum, 100 Ton, Covered  
Hoppers, with gravity gates.  
Delivery 30-45 days

**Bob Hebbeler: 800-822-7429**  
Email: [robert.hebbeler@rgcx.com](mailto:robert.hebbeler@rgcx.com)

### Herzog Railroad Services Inc.

Available for Lease:

110 Ton Rapid Discharge Cars,  
Air Operated Doors  
100 Ton Automated Ballast Cars  
25 100 Ton Flat Bottom Mill Gons

**Keith Schmitz: (816) 901-4091**  
Email: [kschmitz@hrsi.com](mailto:kschmitz@hrsi.com)

## Mid-Am Equipment, Inc.

Available for Sale or Lease:

1 – 20,500 Gallon, 111A100W1,  
EC/Ins – *for captive service only.*  
3 – 23,500 Gallon, 111A100W1,  
EC/Ins – *for captive service only.*  
10 – 89' Flatcars *Suitable for Bridges only.*  
**Phone: (480) 247-3892**  
Email: [bob@midamaz.com](mailto:bob@midamaz.com)

## EQUIPMENT WANTED

### The Rail Mart

Wanted for Purchase:

1000+ Aluminum or Steel coal cars with  
bottom discharge gates. Must have at least  
5 years remaining life.

300+ 5750 CF or larger Covered Hoppers  
for Plastic Pellet service

500+ 3,000 to 3,400 CF Covered Hoppers  
for sand service.

**Conrad Tannhauser: (815)236-2998**  
Email: [Editor@therailmart.com](mailto:Editor@therailmart.com)

## Herzog Railroad Services

Wanted For Purchase

150 +/- Aluminum twin tub coal cars.  
**Keith Schmitz: (816)901-4091**

## Elk Point Transportation Co.

Want to purchase (on or off lease)

Small-cube C/H (286K preferred).  
PD-3s (286K preferred).  
PD-5s (286K and lined preferred).

**Art Graf: (800)749-0530**  
Email: [railcars@ryanadair.com](mailto:railcars@ryanadair.com)

## STORAGE TANKS

### The Rail Mart, Inc.

## 17 Propane Tanks



From 11,000 gallon tot 18,000 gallon.  
\$1.80 per gallon capacity loaded on truck.  
Located in Central Texas includes Stands.

More tanks see page 6

## 4 Propane Tanks



Tanks are located in Holland, TX. Great  
condition. 12,000 gallon tanks 200 PSI.  
Good data tags. 7' in Diameter and 30' long  
weighing 18,000 lbs each.

## Pipes for Culverts

12", 18", 20", 24", 36", 42", 48" and 60"  
pipe for use as culvert. Sold by the foot.  
For more information [Click Here](#)

**Conrad Tannhauser: (815) 2366-2998**  
Email: [Editor@therailmart.com](mailto:Editor@therailmart.com)

# MID-AM EQUIPMENT, INC.

P.O. Box 40398, Mesa, AZ 85274-0398

Bob Schroeder: (480)247-3892

Fax: (480)247-3894

Email: [bob@midamaz.com](mailto:bob@midamaz.com)

[www.midamaz.com](http://www.midamaz.com)



## RAILCARS:

1 – 20,500 Gallon, 111A100W1, EC/Ins  
FOR CAPTIVE SERVICE ONLY

3 – 23,500 Gallon, 111A100W1, EC/Ins  
FOR CAPTIVE SERVICE ONLY

10 – 89', 70-Ton, Flatcars – SUITABLE FOR BRIDGES ONLY

## Axles & Wheel Sets: Used & Rebuilt Trucks

Railcar & Locomotive



## EMD LOCOMOTIVE PARTS/ REBUILT:

Auxiliary Generators 10KW, 14KW, 18KW & 24KW

Main Generators D12, D15, D22, D32, AR10

Traction Motors D57, , D67 D77 & D78

Wheel sets GP & SD Hyatt's/RB Switcher

Air Brake Sets 26L

## LOCOMOTIVES:

1 – SW900, EMD Locomotive

## INDUSTRIAL SWITCHING

Flat Cars For Bridges get Quote



Call or visit **Sterling Rail®** on the web today!


[www.SterlingRail.com](http://www.SterlingRail.com)


[info@SterlingRail.com](mailto:info@SterlingRail.com)

P: 512.263.1953

F: 512.263.9799

 Follow @SterlingRail on Twitter!

 Like Sterling Rail on Facebook!

 Read Sterling Rail Classifieds on Issuu!



# Sterling Rail® CLASSIFIEDS

**FOR SALE**

[Click Here!](#)

**FOR LEASE**

[Click Here!](#)

**CLEARANCE**

[Click Here!](#)

**WANTED**

[Click Here!](#)

**LEASE WANTED**

[Click Here!](#)

**CLEARANCE SALE**  
Locomotives



**STERLING RAIL OWNED**

**(3) (1) SW1200 #1236**

- 567C Engine
- 26L Brakes
- Kim Hot Start
- Engine in good shape
- Excellent wheels
- Running unit
- Offered at shop w/ or w/o alignment control couplers as needed

**Price: Just Reduced to \$135,000!**

**Location:** Midwest

Please Call 512-263-1953!  
**Ref#FSL10993**

**FOR SALE**  
Locomotives



**STERLING RAIL OWNED**

**(5) (3) (1) SD40-2W #5313**

- Original CN Unit
- Built 1978-1979
- Dynamic Braking
- Running Unit
- Pristine Wiring
- Many Upgrades
- Repaired, Qualified & Blue-Carded
- Ready for Service

**Price :** \$225,000

**Location:** Midwest

Please Call 512-263-1953!  
**Ref#FSL10992**

**FOR SALE**  
Locomotives



**STERLING RAIL OWNED**

**(5) (3) B23-7 Locomotives**

- #4012, #4059, #4061
- Approx 2,300 hp
- In excellent condition

[Click Here for #4012 Wheel Report](#)

[Click Here for #4061 Wheel Report](#)

**Price:** \$135,000 each  
Or \$390,000 for all 3  
**Location:** OK

Please Call 512-263-1953!  
**Ref#FSL7739**

**FOR SALE**  
Locomotives



**STERLING RAIL OWNED**

**SW9 Switcher #1207**

- **AAR Trucks w/ BRAND NEW WHEELS!**
- Engine: 12-567B
- New main & rod bearings
- TMs: All D77
- Main Gen: D15C
- AAR control stand
- Nice paint/6BL brakes
- Qualified, in good condition, serviced

**Price:** \$155,000

**Location:** IA

Please Call 512-263-1953!  
**Ref#FSL2441**

**FOR SALE**  
Passenger Cars



**STERLING RAIL OWNED**

**(5) Pullman built Passenger Cars**

- Comet 1 Cab Cars Seating 115
- Comet 1 Trailer Cars w/high/low doors Seating 131
- Built in 1971/Rebuilt 1986 by Bombardier
- Working AC and Heat
- Aluminum sided
- All matching cars

**Price:** \$65,000 each

**Location:** NJ

Please Call 512-263-1953!  
**Ref#FSPC3038**

**FOR SALE**  
Flat Car Bridges



**(30+) 89ft Flat Car Decks Only**

- Decks can be cut down shorter
- Weight: Approx 40,000-43,000lbs

**Price:** \$21,500

**Location:** Midwest

Please Call 512-263-1953!  
**Ref#FSFLB551**

**FOR SALE**  
Tank Car Culverts



**(6) New Culverts**

- Never been used
- Dimensions: 6ft x 40ft
- 10-12 Gauge Steel
- Free Loading

**Price:** \$5,000 each

**Location:** TX

Please Call 512-263-1953!  
**Ref#FSTCC12319**

**FOR SALE**  
Tank Car Culverts



**(10) Tank Car Culverts**

- 9ft x 40ft

**Price:** \$9,750

**Location:** NC

Please Call 512-263-1953!  
**Ref#FSTCC12171**

**FOR SALE**  
Railroad Equipment



**Newly Remanufactured 6700S Production Switch Tamper**

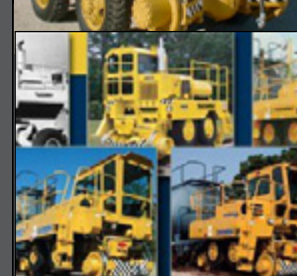
- All new components inc. Harsco upgrades
- Beautiful machine
- One year bumper to bumper full warranty

**Price:** \$599,000

**Location:** Midwest

Please Call 512-263-1953!  
**Ref#FSRE12471**

**WANTED**  
Railcar Movers



**All Types of Railcar Movers Wanted**

**Location:** USA

Please Call 512-263-1953!  
**Ref#WRM5467**

# Rail Car Scrap Directory

## Montebello - California

Phone: (323) 724-9835

### Jimco, Inc.

Fax: (323) 724-9837

Delivering Carrier: UP  
Parts Recovery Program  
Website: [www.jimcoinc.com](http://www.jimcoinc.com)



**GET SCRAP QUOTE**

## Burnham (Chicago Area) - Illinois Scrap Metal Services, LLC

Robert Thompson  
Richard Gertler  
Phone: (708)730-1400

Email: [RThompson@scrapmetalservices.com](mailto:RThompson@scrapmetalservices.com)  
Email: [rgertler@scrapmetalservices.com](mailto:rgertler@scrapmetalservices.com)

Delivering Carrier: IHB  
Railcars & Locomotives  
Parts Recovery program  
Website: [www.scrapmetalservices.com](http://www.scrapmetalservices.com)



**GET SCRAP QUOTE**

## Ohio Scrap Metal Services, LLC

Richard Gertler  
Phone: (708)730-1400

Email: [rgertler@scrapmetalservices.com](mailto:rgertler@scrapmetalservices.com)

Railcars & Locomotives  
Parts Recovery program  
Website: [www.scrapmetalservices.com](http://www.scrapmetalservices.com)



**GET SCRAP QUOTE**

## Coatesville - Pennsylvania Scrap Metal Services, LLC

Richard Gerler  
Phone: (708)730-1400

Email: [rgertler@scrapmetalservices.com](mailto:rgertler@scrapmetalservices.com)

Delivering Carrier: NS to BVRV  
Railcars & Locomotives  
Parts Recovery program  
Website: [www.scrapmetalservices.com](http://www.scrapmetalservices.com)



**GET SCRAP QUOTE**

# Harwood - Texas Jim H. Wilson, LLC.

Phone: (830) 540-4000

**GET SCRAP QUOTE**

Fax: (830) 540-4061



Delivering Carrier: UP  
Parts Recovery Program  
Website: [www.jimcoinc.com](http://www.jimcoinc.com)



# Place your ad here

## Rail Scrappers Location

## On Site Rail Scrappers



*Get you company a Banner Ad*

**QUICK LISTING SCRAP BANNER AD FORM**

# STORAGE TANKS DIESEL, HEATING OIL, PROPANE, LUBE OIL & MORE

## 17 Propane Tanks

From 11,000 gallon to 18,000 gallon  
\$1.80 per gallon capacity loaded on truck  
Located in Central Texas - includes Stands

## Heating Fuel & Diesel

From 25 gallon to 4,000 gallon  
\$0.80 per gallon capacity Loaded on truck  
Located in South Main

## Used Oil/ LubeHyd/ #1 Oil/Ethylene Glycol/ Misc.

From 60 gallon to 12,000 gallon  
\$0.80 per gallon capacity Loaded on truck  
Located in South Maine



CONRAD TANNHAUSER: (815) 236-2998    EMAIL: [EDITOR@THERAILMART.COM](mailto:EDITOR@THERAILMART.COM)

### AD RATES

All listing will run for Two Issues.  
By Line Listings  
\$30 Per line

\$32 Per line with special effects

1/4 page ad \$250

1/2 page ad \$500

Full page ad \$750

All digital ads go up on website also

Deadline for Digital Editions

Last day of Month and the 15th of the month.

### Advertise in The Rail Mart

- ◆ Free website directory listing t
- ◆ Free on line ad Expanded on the Website.
- ◆ Digital Edition sent to over 2,300 contacts.
- ◆ Digital Edition with Live Links
- ◆ Update notice when new ads are Added
- ◆ Free Referral Service

### Website Directory

The Andersons

[www.andersonsrail.com](http://www.andersonsrail.com)

CMF Leasing Inc.

[www.ctifreightsystems.com](http://www.ctifreightsystems.com)

Everest Railcar Services, Inc.

[www.everestrailcar.com](http://www.everestrailcar.com)

ESource Industrial

[www.esourceindustrial.com](http://www.esourceindustrial.com)

Herzog Railroad Services, Inc.

[www.hrsi.com](http://www.hrsi.com)

Independent Equipment Company

[www.IECValue.com](http://www.IECValue.com)

Industrial Asset Management

[www.usedplants.com/](http://www.usedplants.com/)

Jimco, Inc.

[www.jimcoinc.com](http://www.jimcoinc.com)

Jim H. Wilson, LLC.

[www.jimcoinc.com](http://www.jimcoinc.com)

Mid-Am Equipment, Inc.

[www.midamaz.com](http://www.midamaz.com)

Motive Power Resources

[www.mprixinc.com](http://www.mprixinc.com)

ProsChoice - First Aid Supplies

[www.1staidsupplies-us.com](http://www.1staidsupplies-us.com)

Railroad Technologies Corporation.

[www.freightcar.com](http://www.freightcar.com)

RGCX

[www.rgcx.com](http://www.rgcx.com)

The Rail Mart

[www.therailmart.com](http://www.therailmart.com)

TSA Rail Car Services, Inc.

[www.tsarailcar.com](http://www.tsarailcar.com)

Railway Equipment Services

[www.railwayequipmentservices.net](http://www.railwayequipmentservices.net)

Scrap Metal Services

[www.scrapmetalservices.com](http://www.scrapmetalservices.com)

Sterling Rail

[www.sterlingrail.com](http://www.sterlingrail.com)

Tucker Scrap Metal Service

[www.tuckermaterials.com](http://www.tuckermaterials.com)